

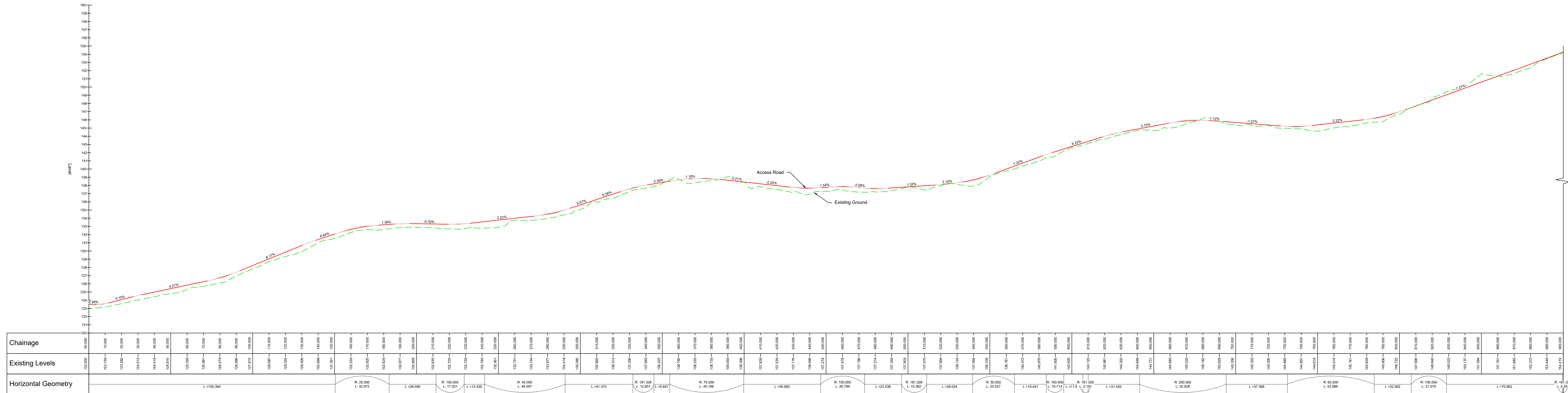
- Notes :**
1. All drawings are to be read in conjunction with all relevant Specifications, Bills of Materials, Architectural, Services and Engineering drawings.
  2. Any discrepancies between these documents shall be brought to the attention of the Engineer.
  3. All dimensions are in millimetres unless noted otherwise.
  4. All levels are in metres related to Ordnance Datum.
  5. Drawings are not to be scaled.
  6. The finalised layout may be subject to micro-siting due to unforeseen ground conditions. The extent of flexibility will be site specific and should generally not extend beyond 20 metres.

**Legend :**

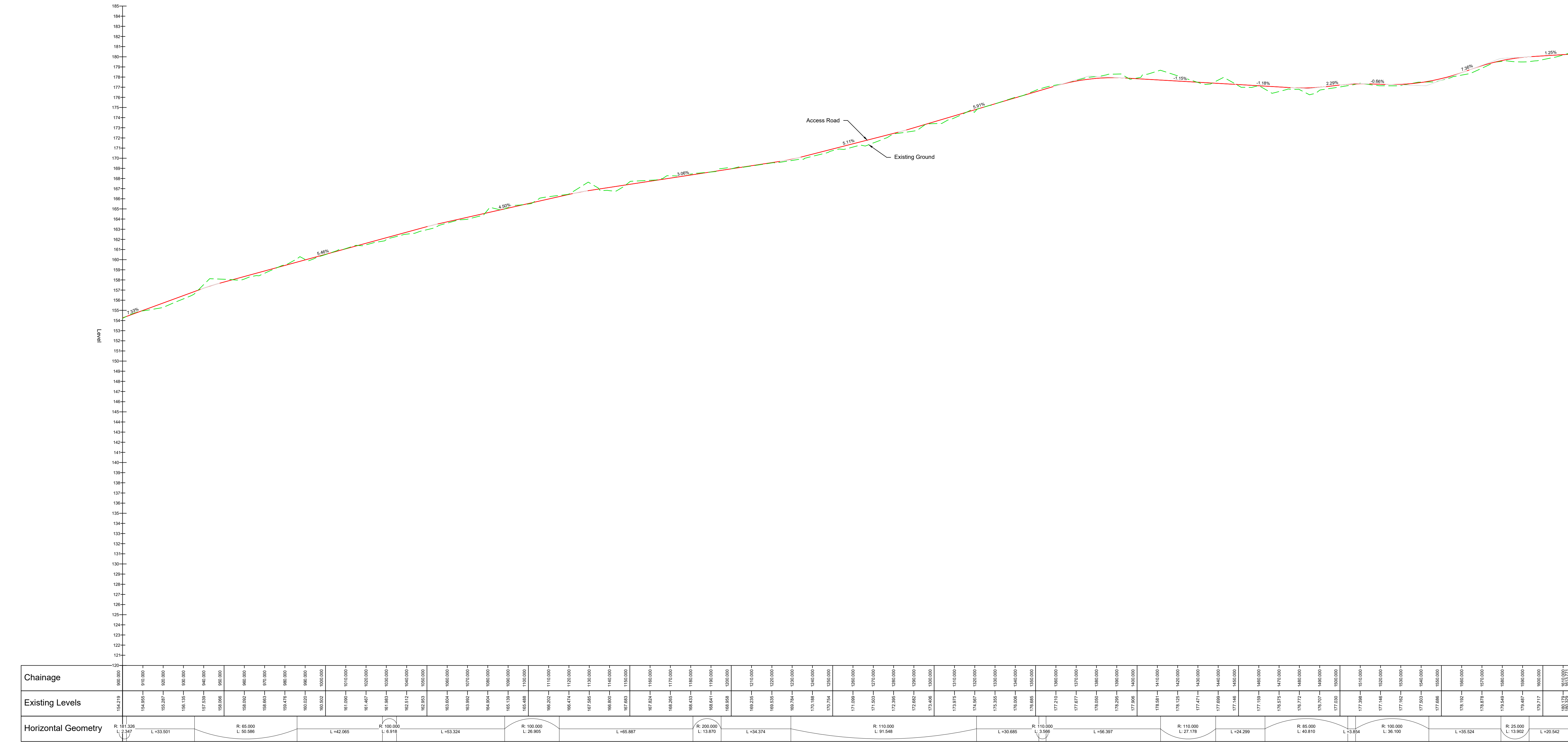
- Existing Ground Profile
- Proposed Access Road Profile

**Reference Drawings :**

- 19107-5032 Road Alignment Locations
- 19107-5005 Site Layout Master Sheet
- 19107-5026 Culvert Crossing Details



SITE ENTRANCE ROAD - LONGSECTION  
SCALE: H 1:500, V 1:100. DATUM: 120.000



SITE ENTRANCE ROAD - LONGSECTION (CONTINUED)  
SCALE: H 1:500, V 1:100. DATUM: 120.000

Rev	Date	Description	By	CHK	APP
A	03.07.2019	Issued For Planning	JL	CM	HRB

Project: Carnwagwan Wind Farm

Title: Road Alignment Locations - Sheet 1

Dent: COILLTE

Malachy Walsh and Partners  
Consulting Engineers  
Cork | Tralee | London | Limerick

Reese Point, Binnaculla, Tralee, Co. Kerry. Tel: +353 (0)69 9123404. Fax: +353 (0)69 1125255. E-mail: malachy@malachy.ie

Scale (A0)	As Shown	Dwg No.	Rev.
Drawn	JL	04.11.2019	A
Chk (DO)	JL	04.11.2019	
Chk (Eng)	PN	07.11.2019	
Approved	JL	07.11.2019	