

Typical Temporary Site Construction Compound Layout Scale 1:250

Pedestrian Area  
 Roofed Area Over Containers

All dimensions and details are indicative only. Specific design will be to the engineers and contract specifications



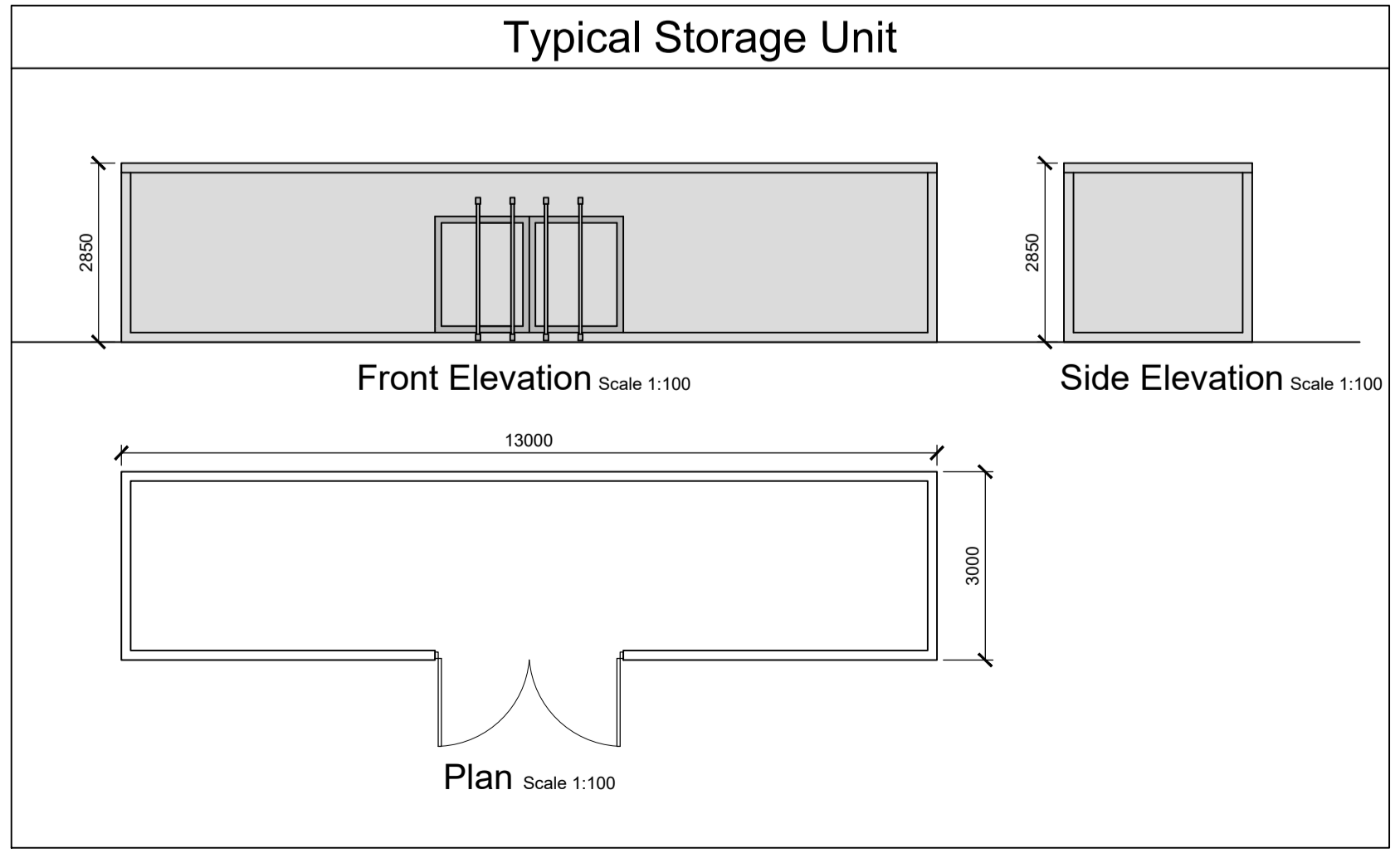
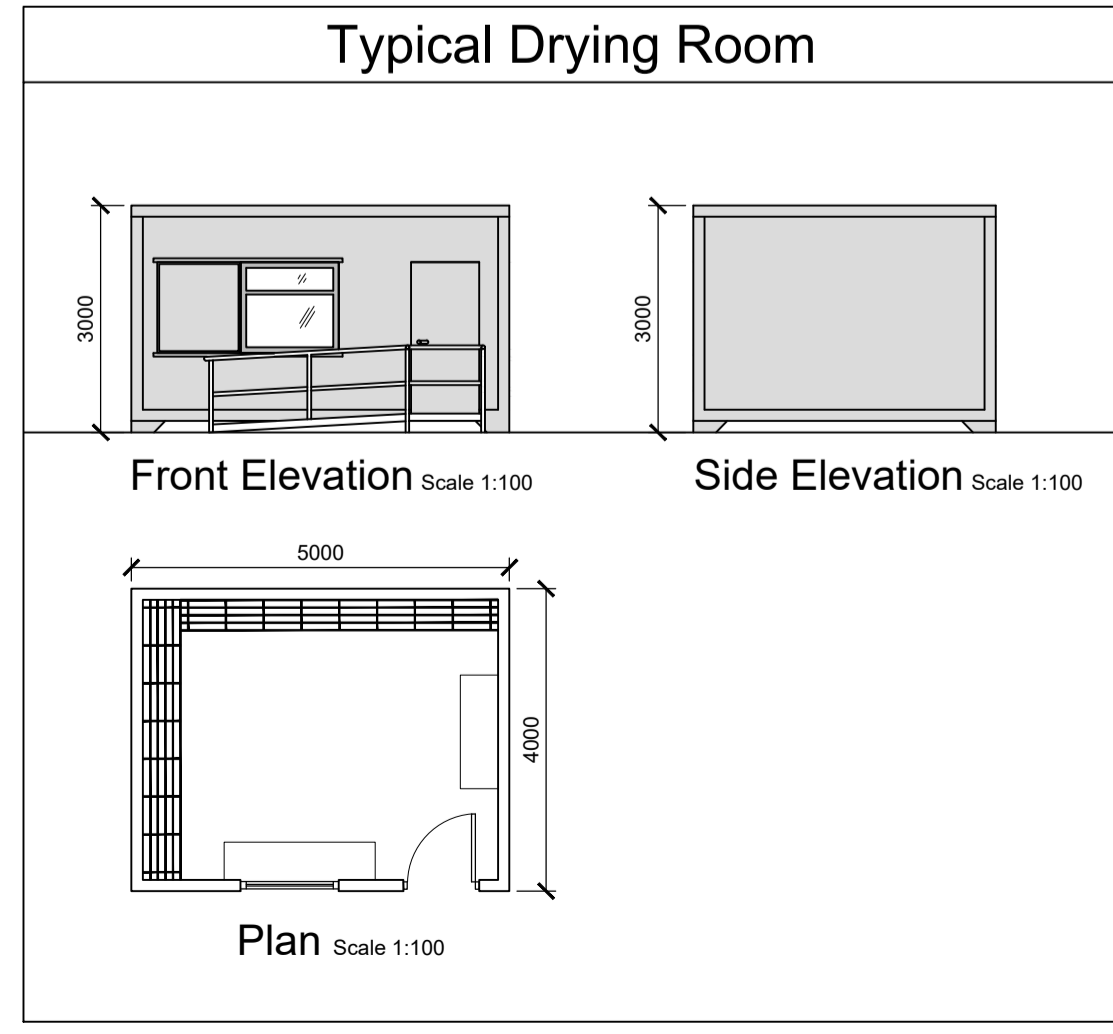
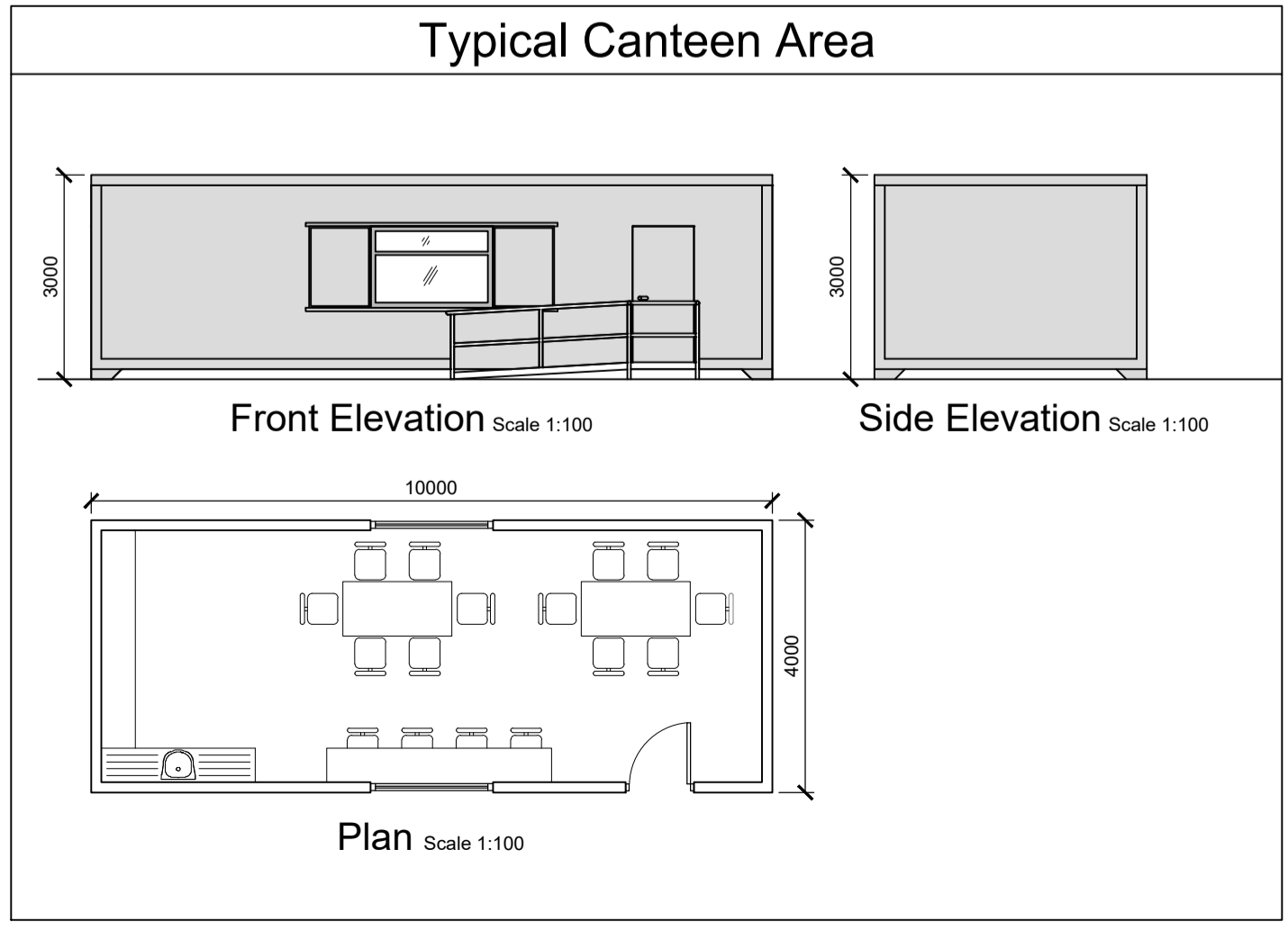
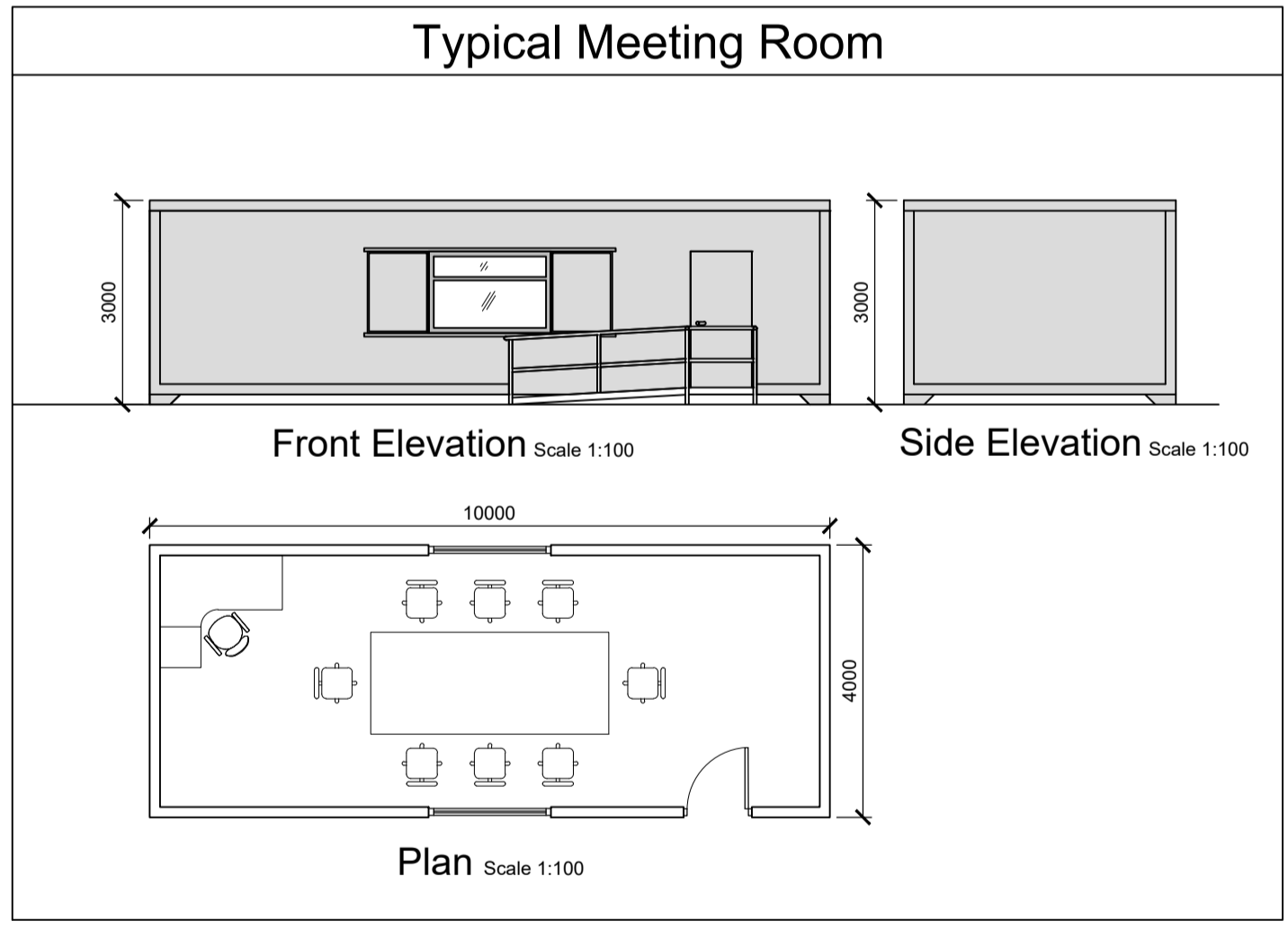
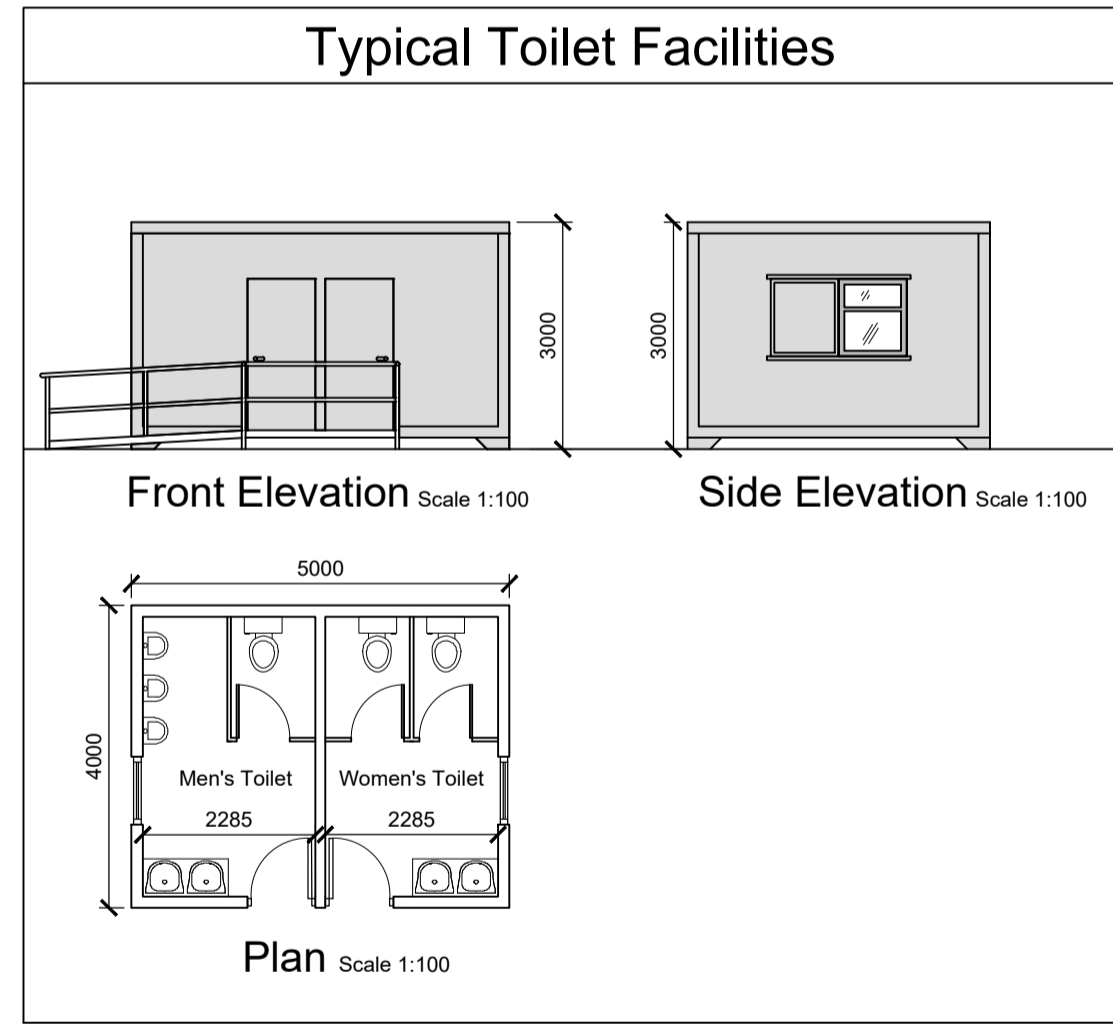
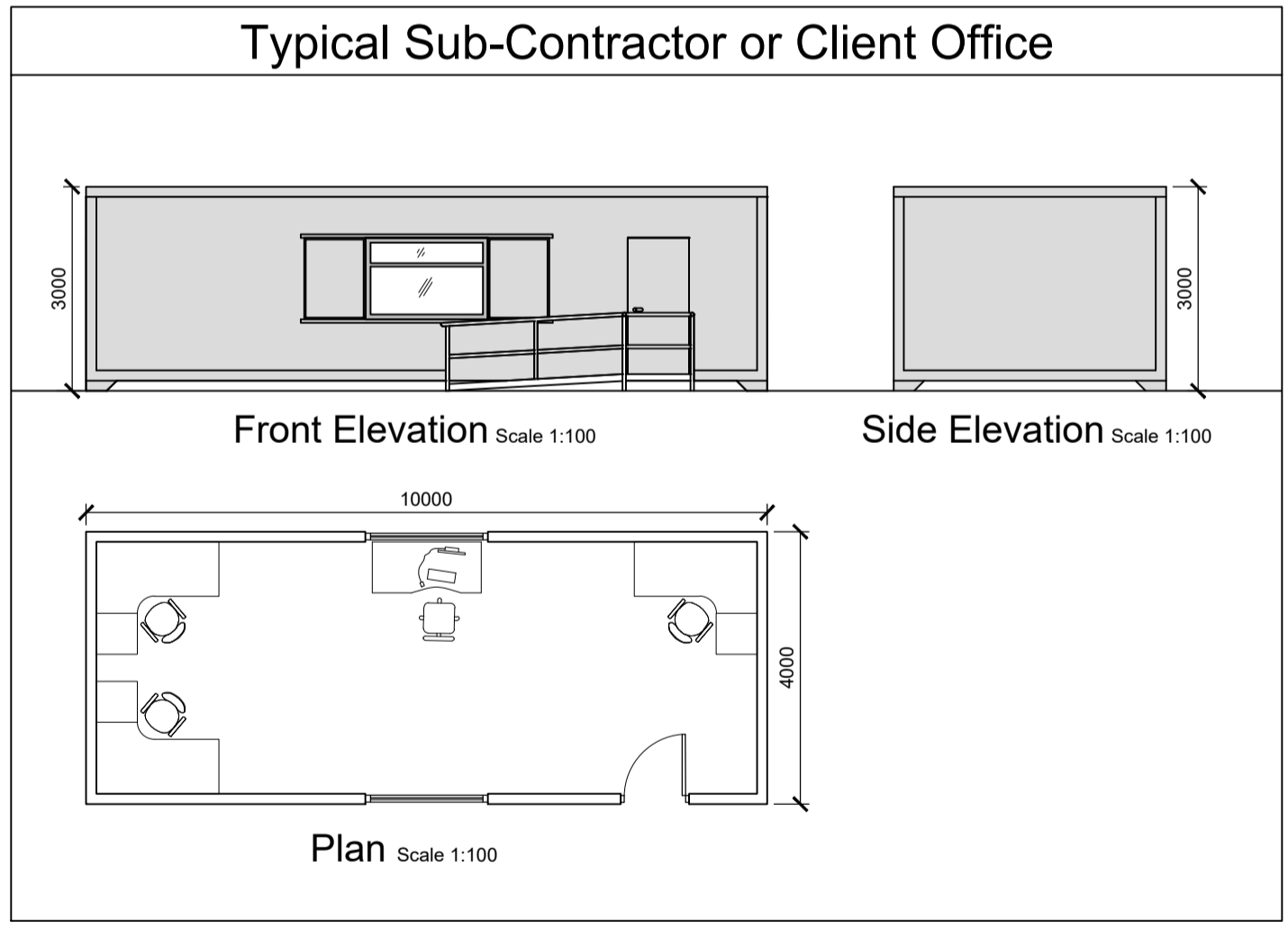
Typical Vandal Proof Storage Unit To Be Used On Site

**Notes :**

1. All drawings are to be read in conjunction with all relevant Specifications, Bills of Quantities, Architectural, Services and Engineering drawings.
2. Any discrepancies between these documents shall be brought to the attention of the Engineer.
3. All dimensions are in millimetres, unless noted otherwise.
4. All levels are in metres related to Ordnance Datum.
5. Drawings are not to be scaled.
6. The finalised layout may be subject to micro-siting due to unforeseen ground conditions. The extent of flexibility will be site specific and should generally not extend beyond 20 metres.

**Reference Drawings :**

19107-5005 Site Layout - Master Sheet



Rev.	Date	Description	by	chk'd	app
A	03.07.2020	Issued For Planning	JK	CM	HBR

Project: Carrowmagowan Wind Farm  
 Title: Temporary Site Construction Compound Layout No.1  
 Typical Layout and Building Details  
 Client: **COILLTE**

**Malachy Walsh and Partners**  
 Consulting Engineers  
 Cork | Tralee | London | Limerick  
 Reen Point, Blennerville, Tralee, Co. Kerry.  
 Tel: +353 (0)66 7123404  
 Fax: +353 (0)66 7126386  
 E-mail: tralee@mwp.ie

Drawn	Ch'd (DO)	Ch'd (Eng)	Approved	As Shown	Drg. No.	Rev.
JK	JK	PN	JL	18.11.2019	19107-5044	A